



Project Care 懷愛會

2022 — 23

ANNUAL REPORT

年報



服務宗旨

Objectives

- 1 致力為兒童、青少年及老人提供日間或住宿照顧服務。
To provide day or residential care service to various client groups, particularly children, young persons, and old people, who cannot manage without them.
- 2 因應服務對象之需要而提供支援性服務，協助他們融入社會。
To provide support care services to meet the needs of the client groups, so as to enable them to remain in the community for as long as possible.
- 3 致力推動義工的參與，並由專業人士協助，令服務更臻完善。
To promote the use of volunteers, complemented by professionals, in the delivery of care services.
- 4 致力提倡社區關懷的意識。
To promote the idea of "care in the community".
- 5 實踐一切有助達成以上各項目標之行動。
To do all such other things as are incidental or conducive to the attainment of above purposes or any of them.



各單位資料

Information of Service Units

中央行政 Central Administration

✉ 香港新界沙田中央郵局郵政信箱 490 號

P. O. Box 490, Shatin Central Post Office, New Territories, Hong Kong.

☎ 2865 0881 📠 2319 2393

🏠 pcadm@projectcare.org.hk

兒童之家辦公室 Small Group Home Office

✉ 香港新界沙田中央郵局郵政信箱 490 號

P. O. Box 490, Shatin Central Post Office, New Territories, Hong Kong.

☎ 2649 1014 📠 2319 2393

🏠 pcsto@projectcare.org.hk

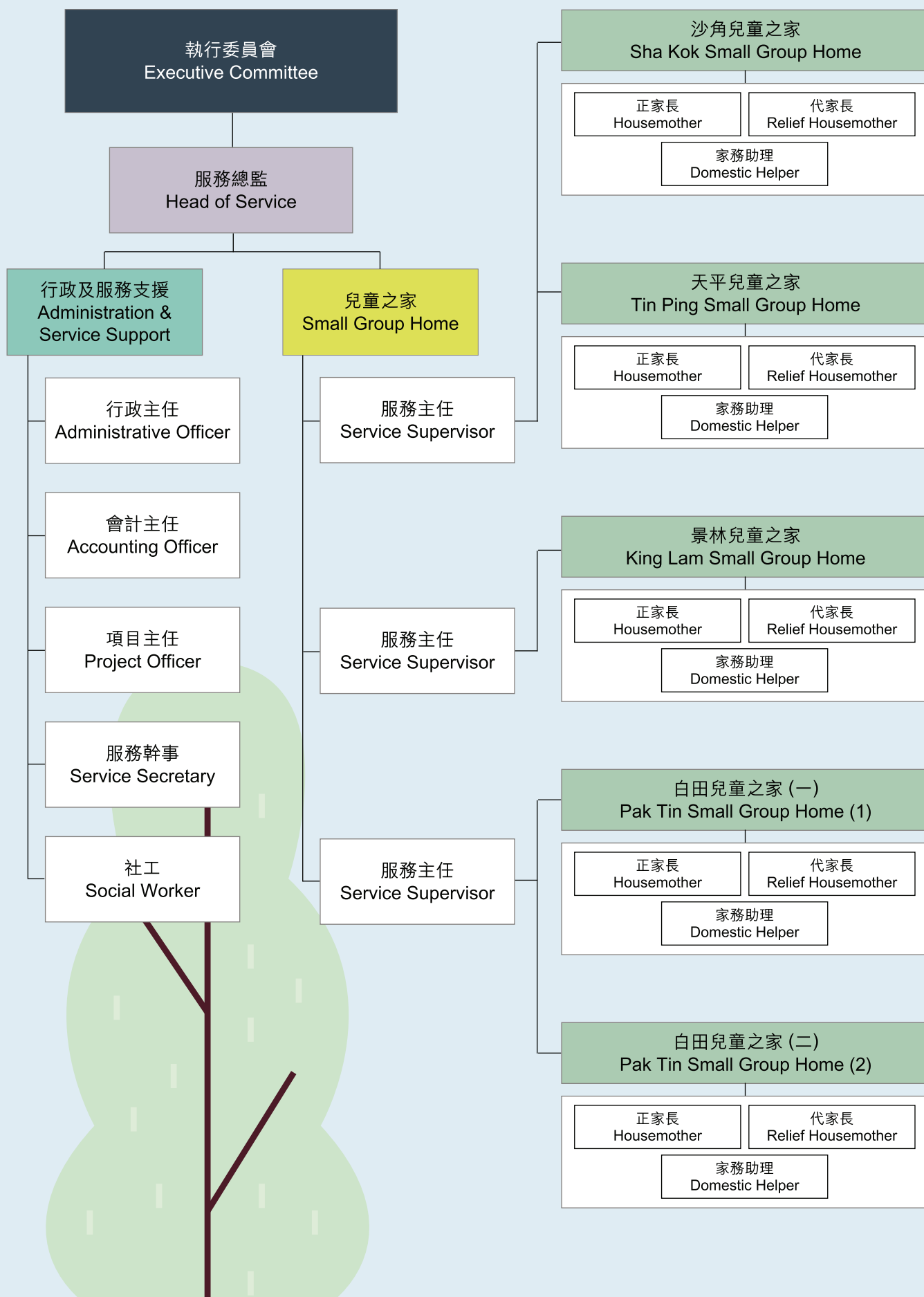
網址 Website

👉 <https://www.projectcare.org.hk>



架構圖

Organization Chart



執行委員會成員及職員

Executive Committee Members and Staff

執行委員會	Executive Committee
主席	Chairman
莫仲堃先生	Mr. Stephen C K Mok
副主席	Vice-Chairman
利源昌先生	Mr. John Y C Lee
義務司庫	Honorary Treasurer
呂志成先生	Mr. Tony C S Lui
義務秘書	Honorary Secretary
梁國豪先生	Mr. K H Leung
委員	Committee Members
霍兆全先生	Mr. David A Fok
賴錦璋太平紳士	Mr. Michael K C Lai, BBS, MH, JP
黎建熙先生	Mr. Benjamin K H Lai

兒童之家	Small Group Home
服務主任	Service Supervisor
吳婷婷女士 (至2022年8月31日)	Ms. T T NG (til 31 August 2022)
戴維思先生 (由2022年11月16日)	Ms. W S TAI (from 16 November 2022)

沙角兒童之家	Sha Kok Small Group Home
代家長	Relief Housemother
溫靜儀女士	Ms. C Y Wan
梁美儀女士 (至2022年12月31日)	Ms. M Y Leung (til 31 December 2022)
家務助理	Domestic Helper
溫惠英女士	Ms. W Y Wan

天平兒童之家	Tin Ping Small Group Home
代家長	Relief Housemother
楊秀蓮女士	Ms. S L Yeung
陳翠貞女士 (由2022年12月17日)	Ms. T C Chan (from 17 December 2022)
家務助理	Domestic Helper
林佩玲女士 (至2022年7月23日)	Ms. P L Lam (til 23 July 2022)
林秀蘭女士 (至2022年12月14日)	Ms. S L Lam (from 14 December 2022)

服務總監	Head of Service
陳翠英女士	Ms. Tracy T Y Chen

行政及服務支援	Administration & Service Support
行政主任	Administrative Officer
黎慧心女士	Ms. W S Lai
會計主任	Accounting Officer
盧清儀女士	Ms. C Y Lo
項目主任	Project Officer
吳偉嘉先生	Mr. W K Ng
服務幹事	Service Secretary
陳詩恩女士	Ms. S Y Chan
社工	Social Worker
潘芷筠女士	Ms. C K Poon

兒童之家	Small Group Home
服務主任	Service Supervisor
蔡靜汶女士	Ms. C M Choi

景林兒童之家	King Lam Small Group Home
正家長	Housemother
余美美女士	Ms. M M Yu
代家長	Relief Housemother
林虹女士 (至2022年6月16日)	Ms. H Lam (til 16 June 2022)
李念慈女士	Ms. L C Lee
家務助理	Domestic Helper
李笑琮女士	Ms. S K Li

兒童之家	Small Group Home
服務主任	Service Supervisor
林燕婷女士 (由2022年9月16日)	Ms. Y T Lam (from 16 September 2022)

白田兒童之家 (一)	Pak Tin Small Group Home (1)
正家長	Housemother
袁淑芬女士	Ms. S F Yuen
代家長	Relief Housemother
鄭帶雲女士	Ms. T W Cheng
劉鳳華女士 (由2023年2月1日)	Ms. F W Lau (from 1 February 2023)
家務助理	Domestic Helper
林潤香女士	Ms. R X Lin

白田兒童之家 (二)	Pak Tin Small Group Home (2)
正家長	Housemother
劉靜雯女士	Ms. C M Lau
代家長	Relief Housemother
伍翠紅女士 (至2022年8月12日)	Ms. T H Ng (til 12 August 2022)
楊秀娥女士 (由2022年9月7日)	Ms. S N Yeung (from 7 September 2022)
家務助理	Domestic Helper
劉婉儀女士	Ms. Y Y Lau

兒童住宿照顧服務

兒童之家

本服務為其家庭暫時無法提供適當照顧而又未能作出其他較佳居住安排之兒童，提供家庭模式住宿及日常起居生活的照顧服務，直至他們可以與家人團聚或被安排到可作長期居住的地方。

本會開設五所兒童之家，而每所兒童之家分別照顧八名四至十八歲之男女童。另為四至十八歲之女童設緊急/短期兒童之家照顧服務名額一個。



Friendship

服務內容

1. 住宿照顧

由一對夫婦及其他家舍職員參與照顧兒童；採用家庭模式管理方法，讓兒童在接近一般正常家庭的環境及氣氛下生活。

2. 日常起居照顧

入住兒童之家的兒童，其生活與一般兒童無異。透過安排，他們會接受正常學校教育，亦須分擔一般家務。每位兒童之健康、學業、社交、情緒及行為等問題均會獲得適當之照顧。

3. 輔導及福利計劃

兒童之家社工及家舍家長均會為個別兒童提供輔導及指導服務，並參與制定其福利計劃，定期檢討每位兒童的留住需要。同時，為個別有特殊需要兒童安排臨床心理服務及主題性小組/活動，以提供適切支援。

4. 社交及康樂活動

為幫助發展兒童的潛能，兒童之家亦會為兒童安排各類有益身心之活動。包括上圖書館、參觀各類博物館及展覽館、學習操作電腦、文化藝術節目欣賞、郊遊、燒烤、游泳、球類活動、宿營、聯歡會、生日會等。



Visiting



Enjoying BBQ at Ping Che Farm



5. 單位年度計劃

每年度由4月開始推行「單位年度計劃」，以主題形式就服務發展、職員發展及主題活動等範疇推行有關之活動。

時段	主題
2022年4月至2023年3月	愛•體藝



g Tai Po Waterfront Park



Happy meal on Lamma Island



Visiting Lamma Island

Residential Child Care Service

Small Group Home

The objective is to provide supervision and care for vulnerable children and young who cannot be adequately cared for by their families and for whom no better alternatives are available until they can reunite with their families or settle down in permanent accommodations.

We have a total number of 5 small group homes to provide out-of-home care services. The capacity of each home is 8, including 4 boys and 4 girls aged from 4-18.

Besides, an "Emergency/ Short-term Care in Small Group Home" placement could be offered to a girl aged from 4-18.

Services Rendered

1. Residential Care

To provide a home-like living environment for the children as managed by a married couple working as houseparents and assisted by other staff members with professional supervision of Social Worker.

2. Daily Care

To let children lead a normal living by arranging school placements in the community and engaging them in the duties of doing domestic chores. Children are also provided with proper and adequate care for their physical and emotional health, social intercourse as well as study and conduct performance.

3. Counselling Service and Welfare Plan

To offer counselling and guidance services to the children and to formulate welfare plan for each of them in accordance with their needs for further service by social worker and houseparents. Besides, clinical psychological service as well as special designed group activities or programmes would be rendered for children with special needs.

4. Social and Recreational Activities

To conduct various desirable activities for developing children's abilities and potentialities, including paying visits to libraries and different kinds of museums, learning to use computers, playing games, enjoying performance and seasonal celebrations.



Delicious outdoor meal



Visiting Sk...



5. Annual Plan

To carry out Annual Plan, including Implementation of service development programmes, staff development programmes and activities with specific topics, with a new main theme commencing from April of each year.

Visiting Cathay Pacific

Period	Subject
April 2022 to March 2023	Love • Sports and Arts

il



sky 100



Visiting Disneyland

單車體驗服務

2017年11月，本會正式開設「**懷愛夢騎行**」單車體驗服務。

源起

2014年始，懷愛會與友好夥伴聖雅各福群會青年服務共同計劃「單車朋輩義工服務」，為懷愛會小朋友提供一系列的單車體驗活動。

本計劃藉着「愛心騎行」單車義工團隊的支持，招募了一群充滿愛心和熱誠的義工，透過單車活動作橋樑，為小朋友定立適切的目標，挑戰自我。在陪伴小朋友成長的過程中，建立他們的品格、自信心及抗逆能力。

因着這份「單車情」，小朋友的生命被建立，且得着正面的轉變，令人感動和鼓舞。「懷愛夢騎行」單車體驗服務因此於2017年正式誕生，並擴潤服務對象，讓更多有需要人士受惠。冀盼我們一直踏風前行，追尋更美願景……

創舉

由本會同工帶領，並獲單車體驗服務義工協助，陪伴著本會兒童之家小朋友成功完成不同難度的騎行單車創舉，概述如下：

2015至2020年期間，一行30多人，共5次，征服台灣的台北、台中、台南、花東及墾丁等各單車路段。

2016年，一行8人，共4位小朋友成功挑戰台灣單車環島1100公里，圓夢凱旋，完成壯舉。

2018年至2019年期間，一行20人，共3次成功遊歷中國廣東省台山、開平、恩平等各地。

2019年，同工及義工團隊前往台灣金門、韓國首爾及日本沖繩視察，開拓更多嶄新單車騎行路線。

使命

本會致力透過多元化的單車活動，推廣安全駕駛單車的知識和態度，從中提升參與者的自信及建立團隊精神，繼而激發一起尋夢，以生命影響生命，共建融和社會！冀望同經歷，常分享，齊成長！



服務內容

- 組織及訓練專業單車義工隊
- 為不同團體提供單車體驗服務
- 舉辦單車維修及保養訓練課程
- 組織本地及境外單車活動
- 單車借用服務

服務統計

(一) 義工服務

服務日期	義工人次	服務時數
2022年4 至2023年3月	545	4008

(二) 單車活動

服務對象	懷愛會	其他團體
活動總數	14	7

基地

2015年，於沙田區設立服務基地。

2017年，於國內恩平開設第一個基地。

以上基地均備有單車及配套設施，可舉辦單車活動。本會展望未來陸續開拓新單車路線，令服務更臻完善。



Project Care Biking Service

In November 2017, we launched our "Project Care Biking" service.

Beginning of Our Service

Since 2014, we worked with our partner, the Youth Services of St. James Settlement, to introduce the "Biking Companions" volunteer service, bringing a series of biking activities to the children living in small group homes operated and managed by Project Care. We recruited a group of volunteers with loving hearts and passions from the biking team "Care Biking". During the biking activities, appropriate goals were set for the children so that they may challenge themselves. The volunteers accompanied the children in their growing up and built up their character, self-confidence and resilience.

Because of this "biking love", our children have grown and changed in a better way. This is touching and encouraging. Hence, we launched the "Project Care Biking" service in 2017. By extending the service to other users, more people can enjoy the fun and benefits of biking. Let's continue to ride in the wind and pursue bigger dreams.....

Our Adventures

The children of our small group homes have successfully completed several biking adventures of different levels of difficulties under the leadership of our colleagues and with the assistance of our volunteers.

Between 2015 and 2020, we organized five tours to Taiwan with around 30 participants per tour to do cycling in Taipei, Taichung, Tainan, Huadong Valley and Kenting of Taiwan.

In 2016, a group of eight, including four children, completed their 1100km tour cycling around Taiwan with strong will and endurance.

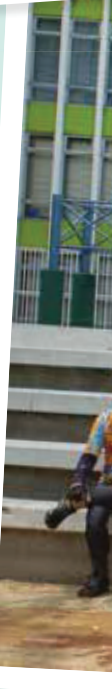
From 2018 to 2019, we organized 3 tours with around 20 participants per tour to do cycling in different cities such as Taishan, Kaiping and Enping.

In 2019, we explored new cycling routes in Kinmen of Taiwan for future biking trip.

In 2019, we explored new cycling routes in Kinmen of Taiwan, Seoul of South Korea and Okinawa of Japan for future biking trips.

Our Mission

We are keen to promote safety knowledge and good riding behavior in the community through the biking activities organized by us. We further hope to build up participants' self-confidence and team spirit. Let's chase dreams, experience, share and grow together in the years to come.





Services Rendered

- Set up and train professional volunteer team
- Provide biking services to different organizations
- Provide bike repair and maintenance courses
- Organize local and overseas biking activities
- Provide bike lending service

Our Bases

In 2015, we set up our first base in Shatin.
 In 2017, we set up our first base in Enping of China.
 We have our own bikes and supporting facilities in our bases for providing biking service.
 We keep on exploring new cycling routes for enhancing our service.

Service Statistics

1) Volunteers Service

Period	No. of Volunteers' Participation	Hour of Voluntary Service
April 2022 to March 2023	545	4008

2) Total No. of Activities

Target Group	Project Care	Other Organizations
Total No. of Service	14	7

聯合家舍活動



日期	主辦機構	活動
5.5.2022 - 29.9.2022	懷愛會	2022-23 體藝樂童行：羽毛球訓練班 (景林兒童之家)
10.5.2022 - 18.10.2022	懷愛會	2022-23 體藝樂童行：小結他班 (景林兒童之家)
11.5.2022 - 27.7.2022	懷愛會	2022-23 體藝樂童行：STEM班 (天平兒童之家)
16.5.2022 - 18.7.2022	懷愛會	2022-23 體藝樂童行：結他班 (沙角兒童之家)
16.5.2022 - 18.7.2022	懷愛會	2022-23 體藝樂童行：小結他班 (沙角兒童之家)
16.5.2022 - 18.7.2022	懷愛會	2022-23 體藝樂童行：STEM班 (沙角兒童之家)
20.5.2022 - 15.10.2022	懷愛會	2022-23 體藝樂童行：單車訓練班
23.6.2022 - 11.8.2022	懷愛會	2022-23 體藝樂童行：創意藝術班 (天平兒童之家)
25.6.2022	懷愛會	2022-23 單位年度計劃《愛•體藝》主題活動(一)：單車活動
4.7.2022 - 1.8.2022	懷愛會	2022-23 體藝樂童行：羽毛球訓練班 (白田兒童之家(一))
5.7.2022 - 1.8.2022	懷愛會	2022-23 體藝樂童行：創意藝術班 (沙角兒童之家)
6.7.2022 - 31.8.2022	懷愛會	2022-23 體藝樂童行：羽毛球訓練班 (白田兒童之家(二))
12.7.2022 - 8.9.2022	懷愛會	2022-23 體藝樂童行：創意藝術班 (白田兒童之家(一)及(二))
16.7.2022 - 4.3.2023	懷愛會	2022-23 體藝樂童行：烘焙班
24.7.2022 - 4.12.2022	懷愛會	2022-23 體藝樂童行：創意藝術班 (景林兒童之家)
30.7.2022	懷愛會	2022-23 活力愛心樂騎行《樂活篇》：單車迎新日
9.8.2022 - 30.8.2022	懷愛會	2022-23 體藝樂童行：羽毛球訓練班 (天平兒童之家)
10.8.2022 - 26.8.2022	懷愛會	2022-23 體藝樂童行：羽毛球訓練班 (沙角兒童之家)
27.8.2022	懷愛會	2022-23 活力愛心樂騎行《樂活篇》：單車郊遊樂
27.8.2022	懷愛會	2022-23 活力愛心樂騎行《樂活篇》：單車迎新日
29.8.2022	懷愛會	2022-23 單位年度計劃《愛•體藝》主題活動(二)：南丫島遊
29.8.2022	懷愛會	2022-23 活力愛心樂騎行《樂活篇》：水上體能訓練日
5.9.2022 - 14.11.2022	懷愛會	2022-23 體藝樂童行：乒乓球訓練班 (景林兒童之家)
13.9.2022 - 18.10.2022	懷愛會	2022-23 體藝樂童行：STEM班 (景林兒童之家)
15.9.2022 - 13.10.2022	懷愛會	2022-23 體藝樂童行：STEM班 (白田兒童之家(一))
17.9.2022	懷愛會	2022-23 活力愛心樂騎行《樂活篇》：田園初體驗





日期	主辦機構	活動
24.9.2022	懷愛會	2022-23 活力愛心樂騎行《樂活篇》：單車樂活遊
4.10.2022	懷愛會	2022-23 單位年度計劃《愛•體藝》主題活動(三)：坪輦農場日營
4.10.2022	懷愛會	2022-23 活力愛心樂騎行《樂活篇》：戶外歷奇訓練營
15.10.2022	懷愛會	2022-23 活力愛心樂騎行《樂活篇》：單車樂活遊
20.10.2022 - 17.11.2022	懷愛會	2022-23 體藝樂童行：STEM班(白田兒童之家(二))
5.11.2022	懷愛會	2022-23 活力愛心樂騎行《樂活篇》：田園初體驗
5.11.2022	懷愛會	2022-23 活力愛心樂騎行《樂活篇》：田園採收樂 I
26.11.2022	懷愛會	2022-23 活力愛心樂騎行《樂活篇》：單車探索遊
10.12.2022	懷愛會	2022-23 活力愛心樂騎行《樂活篇》：單車遠征挑戰日
11.12.2022	懷愛會	參觀國泰城
11.12.2022	懷愛會	昂平一日遊
17.12.2022	懷愛會	聖誕聚餐 2022
17.12.2022	懷愛會	電影欣賞：《奇異大世界》
17.12.2022	蜂鳥成長記	聖誕夜遊賞燈飾
24.12.2022	中英劇團：社區門票計劃	青少年音樂劇團：音樂劇《藏書翁》
29.12.2022	懷愛會	2022-23 活力愛心樂騎行《樂活篇》：田園採收樂 II
14.1.2023	懷愛會	單車樂
14.1.2023	懷愛會	開篷巴士遊
15.1.2023	懷愛會	電影欣賞：《無敵貓劍俠》：8 + 1條命
15.1.2023	懷愛會	大埔海濱公園半天遊
11.2.2023	懷愛會	單車樂
11.2.2023	懷愛會	新春幸運摩天輪 2023
12.2.2023	懷愛會	2022-23 單位年度計劃《愛•體藝》主題活動(四)：野外動向一天遊
25.2.2023 - 26.2.2023	懷愛會	悠遊迪士尼2023
18.3.2023	懷愛會	單車樂



Joint Homes Programmes



Date	Organizer	Programmes
5.5.2022 - 29.9.2022	Project Care: Sports • Arts • Cheers • Kids	Badminton Class (King Lam Small Group Home)
10.5.2022 - 18.10.2022	Project Care: Sports • Arts • Cheers • Kids	Ukulele Class (King Lam Small Group Home)
11.5.2022 - 27.7.2022	Project Care: Sports • Arts • Cheers • Kids	STEM Class (Tin Ping Small Group Home)
16.5.2022 - 18.7.2022	Project Care: Sports • Arts • Cheers • Kids	Guitar Class (Sha Kok Small Group Home)
16.5.2022 - 18.7.2022	Project Care: Sports • Arts • Cheers • Kids	Ukulele Class (Sha Kok Small Group Home)
16.5.2022 - 18.7.2022	Project Care: Sports • Arts • Cheers • Kids	STEM Class (Sha Kok Small Group Home)
20.5.2022 - 15.10.2022	Project Care: Sports • Arts • Cheers • Kids	Cycling Class
23.6.2022 - 11.8.2022	Project Care: Sports • Arts • Cheers • Kids	Creative Arts Class (Tin Ping Small Group Home)
25.6.2022	Project Care	2022-23 <Love • Sports & Arts> : Cycling Tour
4.7.2022 - 1.8.2022	Project Care: Sports • Arts • Cheers • Kids	Badminton Class (Pak Tin Small Group Home (1))
5.7.2022 - 1.8.2022	Project Care: Sports • Arts • Cheers • Kids	Creative Arts Class (Sha Kok Small Group Home)
6.7.2022 - 31.8.2022	Project Care: Sports • Arts • Cheers • Kids	Badminton Class (Pak Tin Small Group Home (2))
12.7.2022 - 8.9.2022	Project Care: Sports • Arts • Cheers • Kids	Creative Arts Class (Pak Tin Small Group Home (1) & (2))
16.7.2022 - 4.3.2023	Project Care: Sports • Arts • Cheers • Kids	Bakery Class
24.7.2022 - 4.12.2022	Project Care: Sports • Arts • Cheers • Kids	Creative Arts Class (King Lam Small Group Home)
30.7.2022	Project Care	2022-23 Project Care Biking: LOHAS Living: Orientation Day I
9.8.2022 - 30.8.2022	Project Care: Sports • Arts • Cheers • Kids	Badminton Class (Tin Ping Small Group Home)
10.8.2022 - 26.8.2022	Project Care: Sports • Arts • Cheers • Kids	Badminton Class (Sha Kok Small Group Home)
27.8.2022	Project Care	2022-23 Project Care Biking: LOHAS Living: Cycling Tour
27.8.2022	Project Care	2022-23 Project Care Biking: LOHAS Living: Orientation Day II
29.8.2022	Project Care	2022-23 <Love • Sports and Arts > : Lamma Island Tour
29.8.2022	Project Care	2022-23 Project Care Biking: LOHAS Living: Water Sports Training
5.9.2022 - 14.11.2022	Project Care: Sports • Arts • Cheers • Kids	Table-tennis Class (King Lam Small Group Home)
13.9.2022 - 18.10.2022	Project Care: Sports • Arts • Cheers • Kids	STEM Class (King Lam Small Group Home)
15.9.2022 - 13.10.2022	Project Care: Sports • Arts • Cheers • Kids	STEM Class (Pak Tin Small Group Home (1))
17.9.2022	Project Care	2022-23 Project Care Biking: LOHAS Living: Farm Day I





Date	Organizer	Programmes
24.9.2022	Project Care	2022-23 Project Care Biking: LOHAS Living: Leisure Cycling I
4.10.2022	Project Care	2022-23 <Love • Sports and Arts> : Farm Day at Ping Che
4.10.2022	Project Care	2022-23 Project Care Biking: LOHAS Living: Day Camp
15.10.2022	Project Care	2022-23 Project Care Biking: LOHAS Living: Leisure Cycling II
20.10.2022 - 17.11.2022	Project Care: Sports • Arts • Cheers • Kids	STEM Class (Pak Tin Small Group Home (2))
5.11.2022	Project Care	2022-23 Project Care Biking: LOHAS Living: Farm Day II
5.11.2022	Project Care	2022-23 Project Care Biking: LOHAS Living: Harvest Day I
26.11.2022	Project Care	2022-23 Project Care Biking: LOHAS Living: Cycling Tour
10.12.2022	Project Care	2022-23 Project Care Biking: LOHAS Living: Cycling Challenge
11.12.2022	Eversheds Sutherland	Visit at Cathay Pacific City
11.12.2022	Project Care	Ngong Ping Tour
17.12.2022	Project Care	Christmas Party 2022
17.12.2022	Project Care	Children's Movie Time: Strange World
17.12.2022	Hummingbird VolunPeers Project	City-orienteeing at Christmas Night
24.12.2022	Chung Ying Theatre Company	Muse Up ! Youth Musical Theatre Troupe Gala Performance: Forget me not
29.12.2022	Project Care	2022-23 Project Care Biking: LOHAS Living: Harvest Day II
14.1.2023	Project Care	Cycling Day
14.1.2023	Project Care	Sightseeing Bus Tour
15.1.2023	Project Care	Children's Movie Time: Puss In Boots: The Last Wish
15.1.2023	Project Care	Fun Day at Tai Po Waterfront Park
11.2.2023	Project Care	Cycling Day
11.2.2023	Project Care	Wheel of Good Fortune 2023
12.2.2023	Project Care	2022-23 <Love • Sports and Arts> : Day Tour from City to Farm
25.2.2023 - 26.2.2023	Project Care	Hong Kong Disneyland Tour
18.3.2023	Project Care	Cycling Day



沙角兒童之家

甲. 宿位: 8

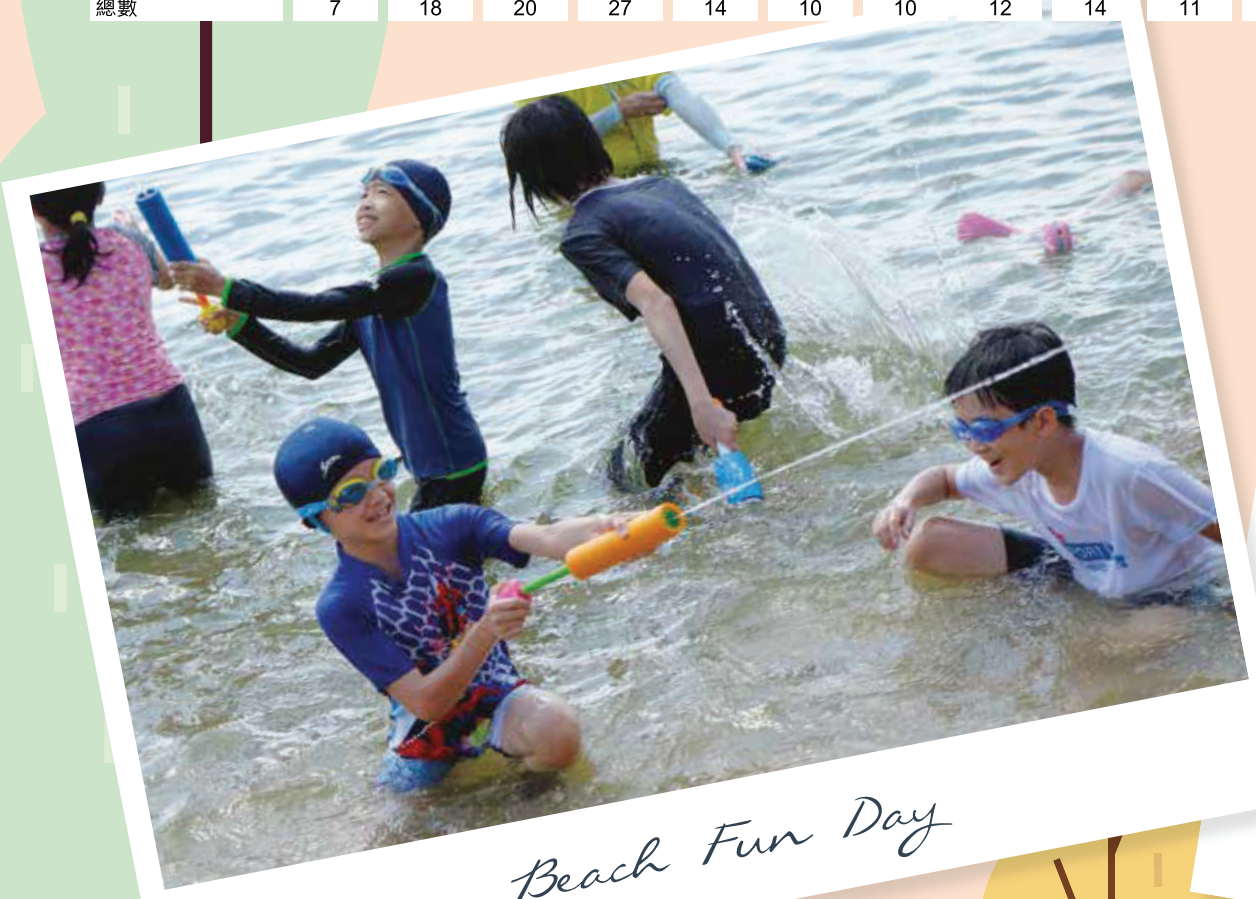
乙. 接受服務兒童數目



	四月	五月	六月	七月	八月	九月	十月	十一月	十二月	一月	二月	三月
男:	4	4	4	4	4	4	4	4	4	4	3	4
年齡: 4-6以下	0	0	0	0	0	0	0	0	0	0	0	0
6-10以下	2	2	2	2	2	2	2	2	2	2	1	1
10-12以下	1	1	1	1	1	1	1	1	1	1	1	2
12-16以下	1	1	1	1	1	1	1	1	1	1	1	1
16-18以下	0	0	0	0	0	0	0	0	0	0	0	0
女:	4	4	4	4	3	3	3	3	4	4	4	4
年齡: 4-6以下	0	0	0	0	0	0	0	0	0	0	0	0
6-10以下	0	0	0	0	0	0	0	0	0	0	0	0
10-12以下	0	0	0	0	0	0	0	0	1	1	1	1
12-16以下	4	4	4	3	2	2	2	1	1	1	1	1
16-18以下	0	0	0	1	1	1	1	2	2	2	2	2
總數	8	8	8	8	7	7	7	7	8	8	7	8

丙. 活動次數

	四月	五月	六月	七月	八月	九月	十月	十一月	十二月	一月	二月	三月
教育	1	16	17	24	6	5	6	5	4	4	2	5
文娛	6	1	0	2	0	1	1	2	2	1	0	1
康樂	0	0	0	0	1	1	2	3	5	4	3	2
體育	0	1	1	1	7	1	1	1	1	1	1	3
節慶	0	0	2	0	0	2	0	1	2	1	4	0
總數	7	18	20	27	14	10	10	12	14	11	10	11



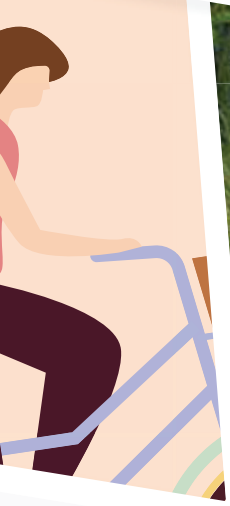
Beach Fun Day



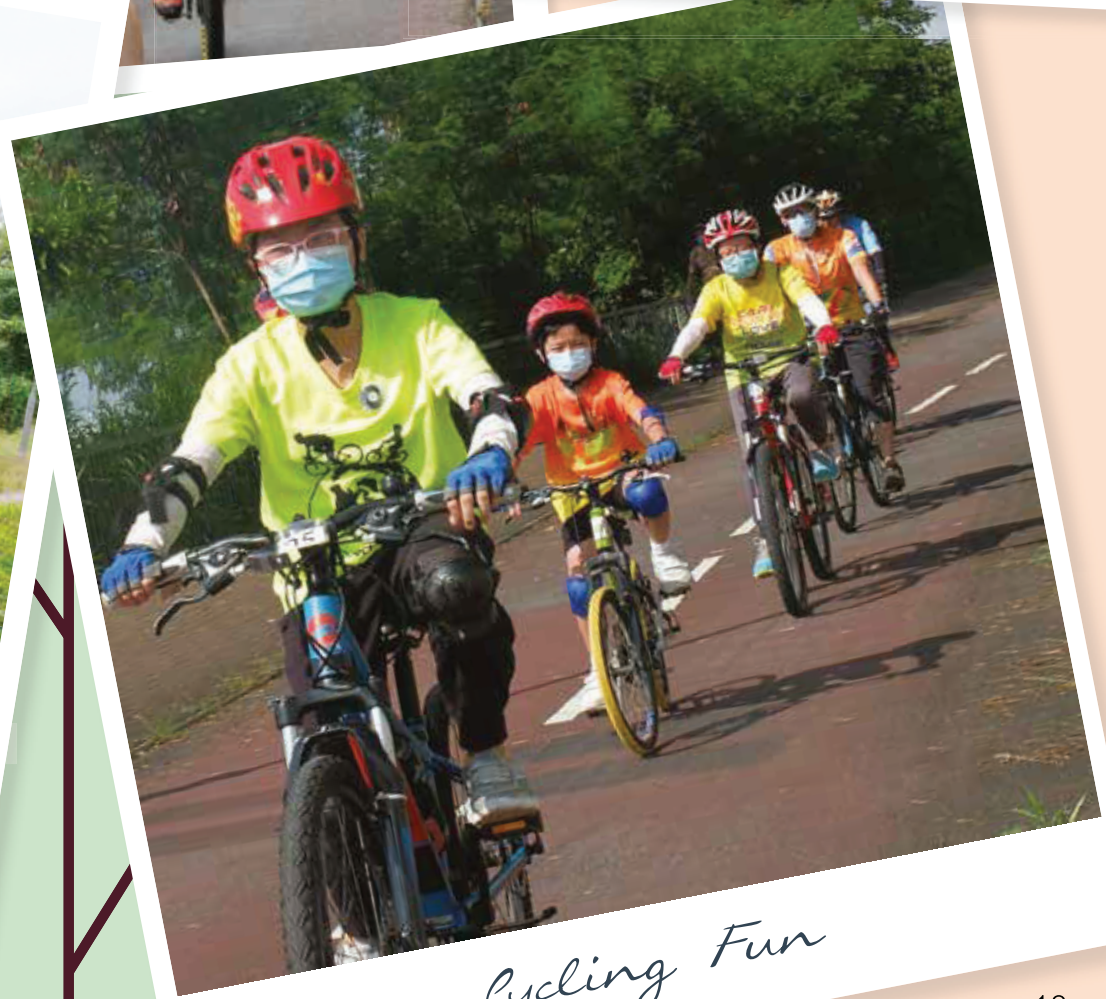
Breathe



Breathtaking Hike



Breathtaking Hike



Cycling Fun

Sha Kok Small Group Home



A. Capacity: **8**

B. Number of Children in Care

	APR '22	MAY	JUN	JUL	AUG	SEP	OCT	NOV	DEC	JAN '23	FEB	MAR
Boys:	4	4	4	4	4	4	4	4	4	4	3	4
Age: 4 - under 6	0	0	0	0	0	0	0	0	0	0	0	0
6 - under 10	2	2	2	2	2	2	2	2	2	2	1	1
10 - under 12	1	1	1	1	1	1	1	1	1	1	1	2
12 - under 16	1	1	1	1	1	1	1	1	1	1	1	1
16 - under 18	0	0	0	0	0	0	0	0	0	0	0	0
Girls:	4	4	4	4	3	3	3	3	4	4	4	4
Age: 4 - under 6	0	0	0	0	0	0	0	0	0	0	0	0
6 - under 10	0	0	0	0	0	0	0	0	0	0	0	0
10 - under 12	0	0	0	0	0	0	0	0	1	1	1	1
12 - under 16	4	4	4	3	2	2	2	1	1	1	1	1
16 - under 18	0	0	0	1	1	1	1	2	2	2	2	2
Total	8	8	8	8	7	7	7	7	8	8	7	8

C. Activities & Programmes

	APR '22	MAY	JUN	JUL	AUG	SEP	OCT	NOV	DEC	JAN '23	FEB	MAR
Education	1	16	17	24	6	5	6	5	4	4	2	5
Entertainment	6	1	0	2	0	1	1	2	2	1	0	1
Recreation	0	0	0	0	1	1	2	3	5	4	3	2
Athletics	0	1	1	1	7	1	1	1	1	1	1	3
Celebration	0	0	2	0	0	2	0	1	2	1	4	0
Total	7	18	20	27	14	10	10	12	14	11	10	11





Making Delicious Cookies



天平兒童之家

甲. 宿位: 8

乙. 接受服務兒童數目

	四月	五月	六月	七月	八月	九月	十月	十一月	十二月	一月	二月	三月
男:	4	4	4	4	4	4	4	4	4	4	4	4
年齡: 4-6以下	0	0	0	0	0	0	0	0	0	0	0	0
6-10以下	1	0	0	0	0	0	0	0	0	0	0	0
10-12以下	2	3	3	3	2	2	1	1	1	1	1	1
12-16以下	1	1	1	1	2	2	3	3	3	3	3	3
16-18以下	0	0	0	0	0	0	0	0	0	0	0	0
女:	4	3	3	3	4	4	4	4	4	4	4	4
年齡: 4-6以下	0	0	0	0	0	0	0	0	0	0	0	0
6-10以下	1	0	0	0	0	0	0	0	0	0	0	0
10-12以下	2	2	2	2	3	3	3	2	2	2	2	2
12-16以下	1	1	1	1	1	1	1	2	2	2	2	2
16-18以下	0	0	0	0	0	0	0	0	0	0	0	0
總數	8	7	7	7	8	8	8	8	8	8	8	8

丙. 活動次數

	四月	五月	六月	七月	八月	九月	十月	十一月	十二月	一月	二月	三月
教育	3	11	15	17	11	6	5	3	5	0	1	5
文娛	11	4	5	5	0	2	1	2	6	1	2	1
康樂	2	0	0	0	1	1	1	1	3	1	3	1
體育	0	1	1	1	11	1	1	1	1	1	3	3
節慶	1	2	0	1	1	1	0	0	3	1	1	0
總數	17	18	21	24	24	11	8	7	18	4	10	10





Visiting Lamma Island



Making Delicious Waffle

Tin Ping Small Group Home



A. Capacity: **8**

B. Number of Children in Care

	APR '22	MAY	JUN	JUL	AUG	SEP	OCT	NOV	DEC	JAN '23	FEB	MAR
Boys:	4	4	4	4	4	4	4	4	4	4	4	4
Age: 4 - under 6	0	0	0	0	0	0	0	0	0	0	0	0
6 - under 10	1	0	0	0	0	0	0	0	0	0	0	0
10 - under 12	2	3	3	3	2	2	1	1	1	1	1	1
12 - under 16	1	1	1	1	2	2	3	3	3	3	3	3
16 - under 18	0	0	0	0	0	0	0	0	0	0	0	0
Girls:	4	3	3	3	4	4	4	4	4	4	4	4
Age: 4 - under 6	0	0	0	0	0	0	0	0	0	0	0	0
6 - under 10	1	0	0	0	0	0	0	0	0	0	0	0
10 - under 12	2	2	2	2	3	3	3	2	2	2	2	2
12 - under 16	1	1	1	1	1	1	1	2	2	2	2	2
16 - under 18	0	0	0	0	0	0	0	0	0	0	0	0
Total	8	7	7	7	8	8	8	8	8	8	8	8

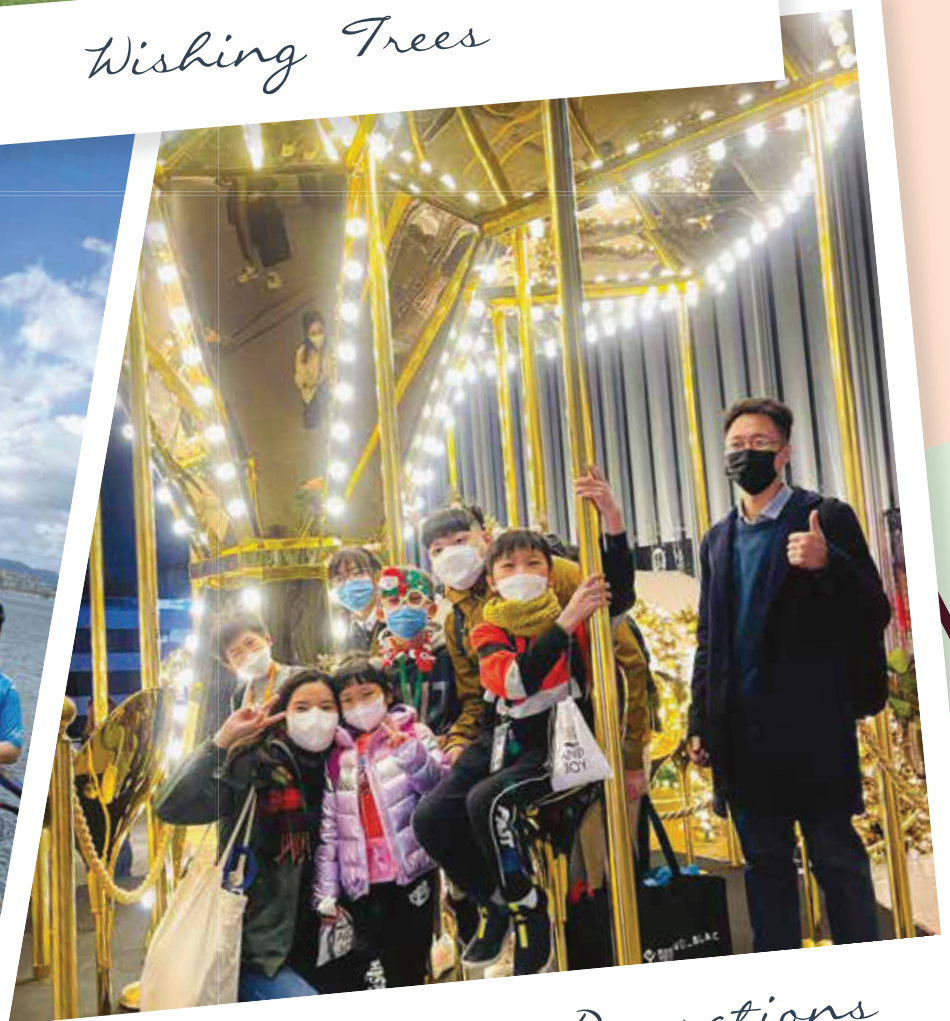
C. Activities & Programmes

	APR '22	MAY	JUN	JUL	AUG	SEP	OCT	NOV	DEC	JAN '23	FEB	MAR
Education	3	11	15	17	11	6	5	3	5	0	1	5
Entertainment	11	4	5	5	0	2	1	2	6	1	2	1
Recreation	2	0	0	0	1	1	1	1	3	1	3	1
Athletics	0	1	1	1	11	1	1	1	1	1	3	3
Celebration	1	2	0	1	1	1	0	0	3	1	1	0
Total	17	18	21	24	24	11	8	7	18	4	10	10





Wishing Trees



Christmas Street Decorations

景林兒童之家

甲. 宿位: 8

乙. 接受服務兒童數目

	四月	五月	六月	七月	八月	九月	十月	十一月	十二月	一月	二月	三月
男:	4	4	4	4	4	4	4	3	3	4	4	4
年齡: 4-6以下	0	0	0	0	0	0	0	0	0	0	0	0
6-10以下	1	1	1	0	0	0	0	0	0	1	1	1
10-12以下	3	3	3	4	4	4	4	3	3	3	3	3
12-16以下	0	0	0	0	0	0	0	0	0	0	0	0
16-18以下	0	0	0	0	0	0	0	0	0	0	0	0
女:	4	4	4	4	4	4	4	4	4	4	4	4
年齡: 4-6以下	0	0	0	0	0	0	0	0	0	0	0	0
6-10以下	1	1	1	1	1	1	1	1	1	1	1	1
10-12以下	1	1	1	1	1	1	0	0	0	0	0	0
12-16以下	1	1	1	1	1	1	2	2	2	2	2	2
16-18以下	1	1	1	1	1	1	1	1	1	1	1	1
總數	8	8	8	8	8	8	8	7	7	8	8	8

丙. 活動次數

	四月	五月	六月	七月	八月	九月	十月	十一月	十二月	一月	二月	三月
教育	5	15	9	4	4	10	8	5	3	2	3	7
文娛	1	9	10	3	1	0	0	0	0	1	1	2
康樂	2	2	1	1	2	1	2	1	1	1	3	2
體育	4	8	11	5	9	8	7	1	2	2	2	2
節慶	0	0	0	1	0	2	1	0	2	0	2	1
總數	12	34	31	14	16	21	18	7	8	6	11	14





King Lam Small Group Home

A. Capacity: **8**

B. Number of Children in Care

	APR '22	MAY	JUN	JUL	AUG	SEP	OCT	NOV	DEC	JAN '23	FEB	MAR
Boys:	4	4	4	4	4	4	4	3	3	4	4	4
Age: 4 - under 6	0	0	0	0	0	0	0	0	0	0	0	0
6 - under 10	1	1	1	0	0	0	0	0	0	1	1	1
10 - under 12	3	3	3	4	4	4	4	3	3	3	3	3
12 - under 16	0	0	0	0	0	0	0	0	0	0	0	0
16 - under 18	0	0	0	0	0	0	0	0	0	0	0	0
Girls:	4	4	4	4	4	4	4	4	4	4	4	4
Age: 4 - under 6	0	0	0	0	0	0	0	0	0	0	0	0
6 - under 10	1	1	1	1	1	1	1	1	1	1	1	1
10 - under 12	1	1	1	1	1	1	0	0	0	0	0	0
12 - under 16	1	1	1	1	1	1	2	2	2	2	2	2
16 - under 18	1	1	1	1	1	1	1	1	1	1	1	1
Total	8	8	8	8	8	8	8	7	7	8	8	8

C. Activities & Programmes

	APR '22	MAY	JUN	JUL	AUG	SEP	OCT	NOV	DEC	JAN '23	FEB	MAR
Education	5	15	9	4	4	10	8	5	3	2	3	7
Entertainment	1	9	10	3	1	0	0	0	0	1	1	2
Recreation	2	2	1	1	2	1	2	1	1	1	3	2
Athletics	4	8	11	5	9	8	7	1	2	2	2	2
Celebration	0	0	0	1	0	2	1	0	2	0	2	1
Total	12	34	31	14	16	21	18	7	8	6	11	14





Bus Tour

白田兒童之家 (一)

甲. 宿位: 8

乙. 接受服務兒童數目

	四月	五月	六月	七月	八月	九月	十月	十一月	十二月	一月	二月	三月
男:	4	4	4	3	4	3	3	4	4	4	4	4
年齡: 4-6以下	0	0	0	0	0	0	0	0	0	0	0	0
6-10以下	2	2	2	2	3	2	2	2	2	1	1	1
10-12以下	1	1	0	0	0	0	0	1	1	2	2	2
12-16以下	1	1	2	1	1	1	1	1	1	1	1	1
16-18以下	0	0	0	0	0	0	0	0	0	0	0	0
女:	2	3	3	4	4	4	3	3	3	3	3	3
年齡: 4-6以下	0	1	1	1	1	1	1	1	1	0	0	0
6-10以下	0	0	0	1	1	1	0	0	0	1	1	1
10-12以下	1	0	0	0	0	0	0	0	0	0	0	0
12-16以下	1	2	2	2	2	2	2	2	2	2	2	2
16-18以下	0	0	0	0	0	0	0	0	0	0	0	0
總數	6	7	7	7	8	7	6	7	7	7	7	7

丙. 活動次數

	四月	五月	六月	七月	八月	九月	十月	十一月	十二月	一月	二月	三月
教育	0	2	0	4	8	7	3	1	1	0	0	0
文娛	7	2	8	7	2	2	4	7	3	3	3	6
康樂	3	7	3	2	3	1	1	1	3	2	3	1
體育	0	1	1	3	1	2	1	1	1	1	1	2
節慶	0	1	1	0	1	0	0	0	3	1	3	1
總數	10	13	13	16	15	12	9	10	11	7	10	10



Bakery Class



Pak Tin Small Group Home (1)

A. Capacity: **8**

B. Number of Children in Care

	APR '22	MAY	JUN	JUL	AUG	SEP	OCT	NOV	DEC	JAN '23	FEB	MAR
Boys:	4	4	4	3	4	3	3	4	4	4	4	4
Age: 4 - under 6	0	0	0	0	0	0	0	0	0	0	0	0
6 - under 10	2	2	2	2	3	2	2	2	2	1	1	1
10 - under 12	1	1	0	0	0	0	0	1	1	2	2	2
12 - under 16	1	1	2	1	1	1	1	1	1	1	1	1
16 - under 18	0	0	0	0	0	0	0	0	0	0	0	0
Girls:	2	3	3	4	4	4	3	3	3	3	3	3
Age: 4 - under 6	0	1	1	1	1	1	1	1	1	0	0	0
6 - under 10	0	0	0	1	1	1	0	0	0	1	1	1
10 - under 12	1	0	0	0	0	0	0	0	0	0	0	0
12 - under 16	1	2	2	2	2	2	2	2	2	2	2	2
16 - under 18	0	0	0	0	0	0	0	0	0	0	0	0
Total	6	7	7	7	8	7	6	7	7	7	7	7

C. Activities & Programmes

	APR '22	MAY	JUN	JUL	AUG	SEP	OCT	NOV	DEC	JAN '23	FEB	MAR
Education	0	2	0	4	8	7	3	1	1	0	0	0
Entertainment	7	2	8	7	2	2	4	7	3	3	3	6
Recreation	3	7	3	2	3	1	1	1	3	2	3	1
Athletics	0	1	1	3	1	2	1	1	1	1	1	2
Celebration	0	1	1	0	1	0	0	0	3	1	3	1
Total	10	13	13	16	15	12	9	10	11	7	10	10





Visiting Lamma Island



Making Marshmallow



白田兒童之家 (二)

甲. 宿位: 8

乙. 接受服務兒童數目

	四月	五月	六月	七月	八月	九月	十月	十一月	十二月	一月	二月	三月
男:	4	4	4	4	3	3	3	3	2	2	4	4
年齡: 4-6以下	0	0	0	0	0	0	0	0	0	0	0	0
6-10以下	2	2	2	2	2	2	2	1	0	0	1	1
10-12以下	2	2	2	2	1	1	1	2	2	2	3	2
12-16以下	0	0	0	0	0	0	0	0	0	0	0	1
16-18以下	0	0	0	0	0	0	0	0	0	0	0	0
女:	4	3	3	3	3	4	4	4	4	4	4	4
年齡: 4-6以下	0	0	0	0	0	0	0	0	0	0	0	0
6-10以下	2	2	2	2	2	3	2	2	2	2	2	2
10-12以下	1	1	1	1	1	1	2	2	2	2	2	2
12-16以下	1	0	0	0	0	0	0	0	0	0	0	0
16-18以下	0	0	0	0	0	0	0	0	0	0	0	0
總數	8	7	7	7	6	7	7	7	6	6	8	8

丙. 活動次數

	四月	五月	六月	七月	八月	九月	十月	十一月	十二月	一月	二月	三月
教育	0	1	0	3	8	3	3	4	1	1	0	1
文娛	7	4	7	4	0	1	6	3	4	5	2	5
康樂	4	2	3	1	3	2	1	1	1	2	4	2
體育	0	1	1	5	2	1	1	2	0	1	2	2
節慶	0	1	0	0	0	2	0	0	2	1	1	0
總數	11	9	11	13	13	9	11	10	8	10	9	10





Wild Day Camp

Pak Tin Small Group Home (2)



A. Capacity: 8

B. Number of Children in Care

	APR '22	MAY	JUN	JUL	AUG	SEP	OCT	NOV	DEC	JAN '23	FEB	MAR
Boys:	4	4	4	4	3	3	3	3	2	2	4	4
Age: 4 - under 6	0	0	0	0	0	0	0	0	0	0	0	0
6 - under 10	2	2	2	2	2	2	2	1	0	0	1	1
10 - under 12	2	2	2	2	1	1	1	2	2	2	3	2
12 - under 16	0	0	0	0	0	0	0	0	0	0	0	1
16 - under 18	0	0	0	0	0	0	0	0	0	0	0	0
Girls:	4	3	3	3	3	4	4	4	4	4	4	4
Age: 4 - under 6	0	0	0	0	0	0	0	0	0	0	0	0
6 - under 10	2	2	2	2	2	3	2	2	2	2	2	2
10 - under 12	1	1	1	1	1	1	2	2	2	2	2	2
12 - under 16	1	0	0	0	0	0	0	0	0	0	0	0
16 - under 18	0	0	0	0	0	0	0	0	0	0	0	0
Total	8	7	7	7	6	7	7	7	6	6	8	8

C. Activities & Programmes

	APR '22	MAY	JUN	JUL	AUG	SEP	OCT	NOV	DEC	JAN '23	FEB	MAR
Education	0	1	0	3	8	3	3	4	1	1	0	1
Entertainment	7	4	7	4	0	1	6	3	4	5	2	5
Recreation	4	2	3	1	3	2	1	1	1	2	4	2
Athletics	0	1	1	5	2	1	1	2	0	1	2	2
Celebration	0	1	0	0	0	2	0	0	2	1	1	0
Total	11	9	11	13	13	9	11	10	8	10	9	10



Christmas Party



Making Snacks



年度收支表

Statement of Income and Expenditure

(截至2023年3月31日)

(For the Year Ended 31 March 2023)

	2023	2022
	HK\$	HK\$
INCOME		
Social Welfare Department	13,304,543	13,050,937
Social Welfare Development Fund	12,000	30,000
Lotteries Fund for Block Grant	192,000	195,000
Lotteries Fund for Wi-Fi Project	66,000	66,000
Allocation from The Community Chest	465,500	465,500
Programme fee income	106,139	138,780
Interest income	66,855	10,518
Donation and sundry income	378,178	417,364
Long service payment	55,000	-
Total Income	14,646,215	14,374,099
EXPENDITURE		
Accumulating compensated absences	70,000	-
Advertisement	40,992	28,896
Audit fee	52,000	52,000
Cleaning charges and materials	43,904	51,645
Employee benefit expenses	10,276,180	9,705,805
Food	523,264	462,191
Instructor fee	164,000	-
Insurance	253,461	230,971
Lotteries Fund for Block Grant	5,168	23,000
Medical expenses	-	112,545
Newspaper and periodical	38,725	7,514
Postage	2,865	1,009
Printing and stationery	52,033	47,002
Programme expenses	546,055	738,508
Professional support expenses	108,000	85,000
Rent and rates	552,346	526,642
Repair and maintenance	713,798	1,144,578
Sundry expenses	42,945	44,710
Telephone & broadband service	31,358	31,338
Travelling expenses	35,535	47,347
Utilities expenses	101,216	95,788
Wi-Fi Project expenses	55,580	155,518
Total Expenditure	13,709,425	13,592,007
Transfer from/(to) Reserve Fund	(459,330)	(357,914)
Surplus/(Deficits) for the year	477,460	424,178

上面所列有關截至2023年3月31日的財務資料，並不是我們有關該年度的法定財務報表。我們將會於周年成員大會後，把有關該年度的財務表遞交至公司註冊處。核數師已就該財務報表準備了核數報告。在核數師報告中，(i) 沒有保留，(ii) 沒有提述核數師在不就該報告作保留的情況下以強調的方式促請有關人注意的任何事宜；及 (iii) 沒有載有根據《公司條例》的第406(2) 或407(2) 或407(3) 條作出的陳述。

本會最近財政年度之財務報告，包括社會福利署津貼之整筆撥款儲備狀況，會由社會福利署上載至「非政府機構周年財務報告」之網頁內，歡迎到相關網頁瀏覽。

整筆撥款儲備於本會過去一年使用情況及未來使用計劃：主要用於履行對員工的合約承諾、維持或加強服務和推行策略性發展，包括透過改善現有員工的聘用條件、支持員工專業發展等方法，以建立一支優質的員工隊伍。如想進一步了解整筆撥款儲備之使用情況及未來使用計劃，歡迎隨時聯絡我們。

非定影員工的公積金儲備於本會過去一年使用情況及未來使用計劃：按指定用途善用，藉此提高員工士氣，增加員工對機構的歸屬感。

The financial information related to the year ended on 31 March 2023 shown above is not our statutory financial statements for that year. We will deliver the financial statements for that year to the Companies Registry after Annual General Meeting. An auditor's report has been prepared on the specified financial statements for that financial year. The auditor's report (i) was unqualified, (ii) did not refer to any matters to which the auditor drew attention by way of emphasis without qualifying the report, and (iii) did not contain a statement under sections 406(2) or 407(2) or 407(3) of the Companies Ordinance.

The recent annual financial report, including status of SWD subvention Lump Sum Grant (LSG) Reserve, of our Project is uploaded to webpage "NGOs' Annual Financial Reports" of SWD Website by Social Welfare Department for further information.

We used the LSG Reserve in the past year and plan to use it in the coming year for the following purposes: fulfilling the contractual commitment to staff, maintaining, or strengthening service delivery and implementing strategic development plans, including building up a staff team with high quality through enhancement of the employment terms of existing staff, supporting the professional development of staff, etc. Please contact us if you would like to have more information about our utilization of the LSG Reserve.

In the past year, we have maximized the use of the Provident Fund (PF) Reserve for non-snapshot staff for the designated purpose so as to enhance staff morale and their sense of belonging to the organization and we plan to continue to do so in the coming year.



鳴謝 Acknowledgement



在過去一年，本會得到社會上各機構、團體及人士的愛心捐助及鼎力支持，謹在此致以衷心謝意：

Our Project wishes to extend its sincere appreciation to the following organizations and donors for their contributions and efforts made during the past year.

坪輦國泰花園魚菜共生實驗農場Aquaponics Ping Che
 希望之箱Box of Hope
 佛教覺光法師中學Buddhist Kok Kwong Secondary School
 國泰航空Cathay Pacific
 基督堂(聖公會) Christ Church Kowloon Tong
 基督堂幼稚園Christ Church Kindergarten
 基督教靈實協會Haven Of Hope Christian Service
 中英劇團Chung Ying Theatre Company
 香港商業廣播有限公司Hong Kong Commercial Broadcasting Corporation Limited
 安睿順德倫國際律師事務所 Eversheds Sutherland
 肥仔達食品有限公司Fat Chi Tat Food Company Limited
 膳心連基金Foodlink Foundation
 民政事務署Home Affairs Department
 北區民政事務署Home Affairs Department, North District
 西貢民政事務處Home Affairs Department, Sai Kung District
 沙田民政事務處Home Affairs Department, Shatin District
 蜂鳥成長記Hummingbird VolunPeers Project
 蘇媽·蘇媽馬來西亞茶餐室Kedai Kopi Semua Semua
 南丫島漁民文化村Lamma Fisherfolk' s Village
 李嘉誠基金會 Li Ka Shing Foundation
 沙田婦女會Sha Tin Women' s Association
 社會福利署Social Welfare Department
 香港公益金The Community Chest of Hong Kong
 香港社會服務聯會The Hong Kong Council of Social Service
 台灣鐵馬單車旅運 TWCT Cycling Service
 Ms Chan Yik Woon Yvonne
 Cheng Yu Ho
 Mr. Cheung Yu Yan Tommy
 Mr. William Jacobsen
 Mrs. Anne Jacobsen
 Mr. Kwok Lit Tong
 Mr. Andrew Lai
 Mr. Daniel S C Lai
 Mr. Lai Kam Cheung Michael, BBS, MH,JP
 Dr. Lai Yuk Yau Timothy
 Lam Hon
 Mr. Lui Chi Shing
 Mr. Mok Chung Kwan Stephen
 Ms Tam Man Yee Millie
 Tam Ming Kar Franklin
 Mr. Wong Hoi Leong Felix
 The Family of Gilbert Wong
 賴琬璋
 呂綺慧
 呂雅歷



陳文芳女士 Ms Connie Chan
 陳麗雅女士 Ms Lily Chan
 陳宇正先生 Mr. Maurice Chan
 陳滿珍女士 Ms Chan Mun Chun
 陳沈興先生 Mr. Chan Sham Hing
 鄭駿熙先生 Mr. Alvin Cheng
 鄭鳳儀女士 Ms Koey Cheng
 鄭次良先生 Mr. Paul Cheng
 張耀昌先生 Mr. Cheung Yiu Cheong
 周麗珍女士 Ms Chow Lai Chun
 周煒明先生 Mr. Chow Wai Ming
 范錦輝先生 Mr. Fan Kam Fai
 方更運先生 Mr. Fong King Wan
 馮炳坤先生 Mr. Fung Ping Kwan
 何柱東先生 Mr. Tony Ho
 熊國章先生 Mr. Hon Kwok Cheung Justus
 甘澤雄先生 Mr. Kam Chak Hung
 揭坤旋女士 Ms Kit Kwan Suen
 郭愛君女士 Ms Kwok Oi Kwan Annie
 郭耀霜女士 Ms. Kwok Yiu Sheung
 林俊成先生 Mr. Lam Chun Shing Clive
 林擎龍先生 Mr. Lam King Lung Joseph
 羅國強先生 Mr. Law Kwok Keung
 林如琴女士 Ms Susan Lam
 羅惠文先生 Mr. Law Wai Man
 劉鳳華女士 Ms Lau Fung Wah
 李松近先生 Mr. Lee Chung Kun
 李仲賢先生 Mr. Lee Chung Yin
 李文富先生 Mr. Lee Man Fu Tony
 梁長光先生 Mr. Leung Cheung Kwong
 梁淑君女士 Ms Joyce Leung
 梁國豪先生 Mr. Leung Kwok Ho
 梁美蓮女士 Ms Leung Mei Lin
 梁森泉先生 Mr. Leung Sham Chuen
 盧瑪莉女士 Ms Lo Mary
 吳志平先生 Mr. Ng Chi Ping
 吳琴英女士 Ms Kimmy Ng
 顏文娥女士 Ms Natalie Ngan
 鄧昭燦先生 Mr. Tang Chiu Chan
 曾文鏜先生 Mr. Jason Tseng
 黃筱枝女士 Ms Cherry Wong
 王曼姿女士 Ms Wong Man Chi
 邢宜成先生 Mr. Ying Yi Shing
 阮建興先生 Mr. Yuen Kin Hing
 陳淑鳳女士
 鄭楚卿女士
 趙英祥先生
 梁子榮先生
 廖桂有先生
 梅應全先生
 吳國強先生
 譚達明先生
 梁吳佳先生
 廖洪海先生
 Ms Joei Tsang
 Ms Cindy Yeung
 Mavis姐姐



單車體驗花絮 Project Care Biking Service Gallery





兒童作品集 Children's Artworks

童心童畫，童心童造，天真瀾漫的創作！

Children drew and made with their hearts, all are pure and lovely handiwork!







懷愛會 Project Care

香港新界沙田中央郵局郵政信箱 490 號
P. O. Box 490, Shatin Central Post Office, New Territories, Hong Kong.

電話 Tel: 2865 0881 傳真 Fax: 2319 2393
電郵: pcsto@projectcare.org.hk

www.projectcare.org.hk

